



## XConnect's NPQ Service

Optimise A2P messaging with direct routing to reduce cost, increase quality and take control



## Our NPQ datasets

Over 100 countries today have implemented Mobile Number Portability (MNP). In many countries, over 40% of numbers have been ported. Therefore, knowing whether a number has been ported is a key enabler for advanced traffic routing. We have 45 data sets on board and access to others remotely.

## Why do you need them?

### A2P SMS Assurance:

Guarantee delivery of A2P messages using global number range and number portability data. Ensure customers are providing an optimised experience to end users and increase customer loyalty, trust and revenue.

### Routing Optimisation:

Use accurate routing information such as network (MNC) and country codes (MCC), for the current service provider for a given telephone number. Identify if a number is ported out from the original number range holder.



## The benefits

### Safe and accurate SMS delivery

- **Reduce Termination Costs** - Routing communications directly to a terminating operator rather than through intermediaries increases margins.
- **Service Level Improvements** - Routing directly rather than through multiple intermediaries removes interconnection delays, avoids unnecessary business support, improves delivery assurance and leads to a better customer experience.
- **Enable Sophisticated Routing** - Advanced Routing, Rating and Revenue Assurance systems require A number and B-number portability information to implement origin and destination-based routing.

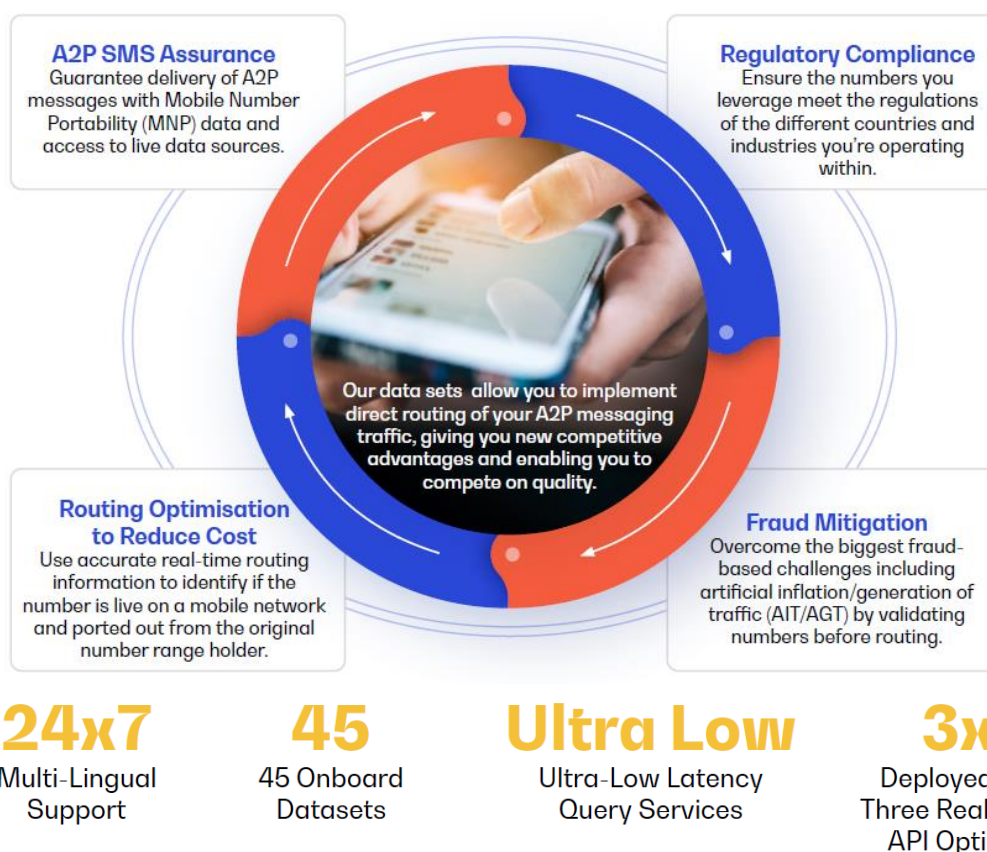
## Why XConnect?

We have the **largest and most trusted** datasets in international telecoms and are continually refining them to ensure absolute accuracy.

We are solely focused on making it simple to use telecoms data in your operations with an **agile, collaborative and consultative** approach.

We have **nearly 20 years of experience** in successfully using data to solve a range of A2P service provider challenges.

The industry comes to us when they need to publish changes as they know they can depend on us having the **latest information on demand**. We even helped the industry handle large scale routing and number range ownership adjustments such as mergers and MVNO hosting changes.



## How to access our NPQ services

We support a range of technologies, driven by user preference and the capabilities of their platform. XConnect's APIs have been implemented by many voice and messaging providers, and although proprietary, conform with the general standards of each technology. On the whole, services are accessed via the public internet, secured by IPSec or HTTPS.

### HTTP API

Preferred by web application platforms but increasingly used by telecom platforms.

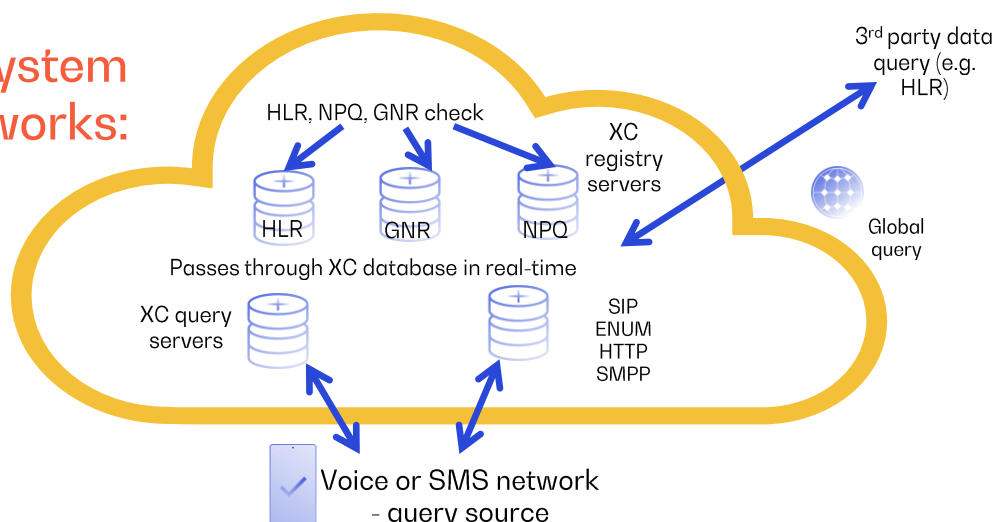
### ENUM API

Preferred by network switches and firewalls where high performance and low processing overheads are required.

### PORTAL

A web-based portal allows each of the services to be queried manually for individual numbers, by a batch upload and offline processing, also supporting manual reporting and web downloads of the GNR and DNO data sets.

## How our query system works:



E: [info@xconnect.net](mailto:info@xconnect.net)  
T: +44 (0) 20 83714800  
W: [www.xconnect.net](http://www.xconnect.net)

**XConnect**  
A Somos Company



XConnect's Number Information Services are used for voice and messaging routing, fraud protection and to identify and validate insights. They also support the deployment and evolution of next-generation communications, such as VoLTE and RCS.

XConnect's service is accessed through its global distributed hybrid cloud platform using simple, secure, scalable real-time protocols and APIs.

**2.3bn**

2.3 billion portability records

**75%**

Coverage across 75% of total global mobile subscribers

**3.5bn**

Over 3.5bn queries per month